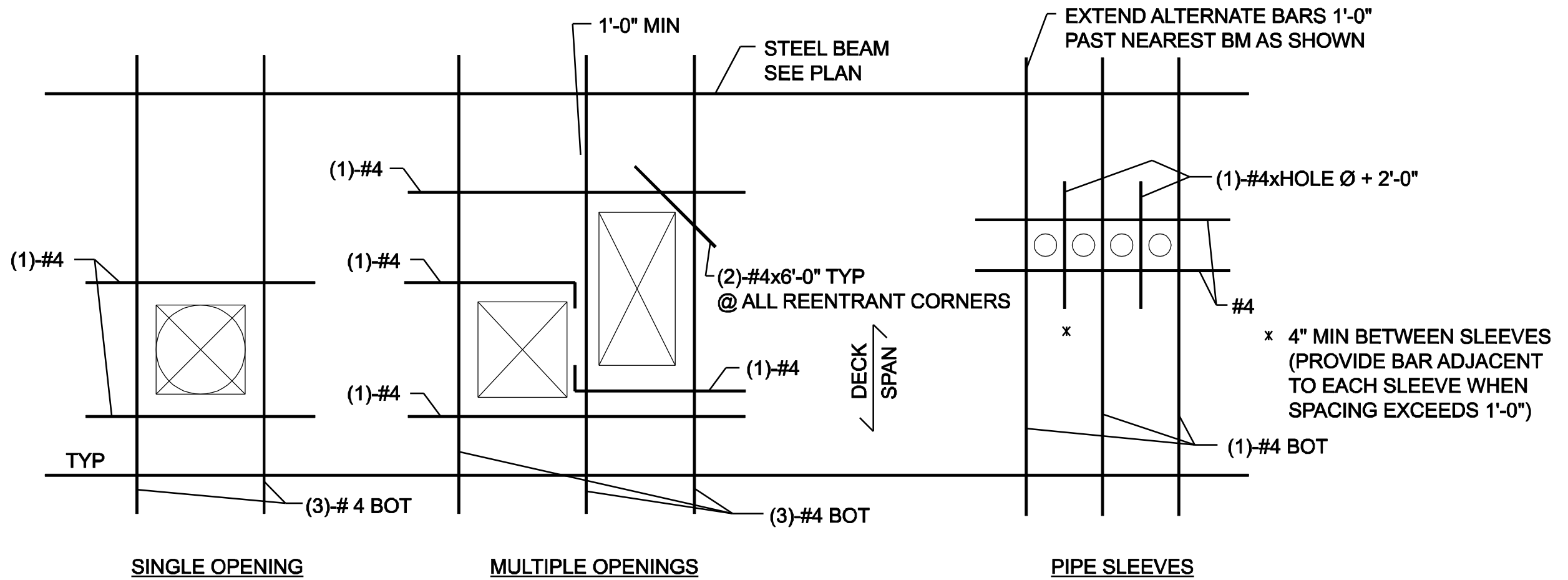


TYPICAL NON-BEARING MASONRY WALL TOP SUPPORT

1 DETAIL
NTS
S-2407, S-2408, S-2409

NOTE: WHEN SPACING BETWEEN MULTIPLE OPENINGS IS >2'-0" REINFORCEMENT SHOULD BE PLACED AS IF EACH OPENING IS A SINGLE OPENING.



- NOTES:**
- COORDINATE SIZES AND LOCATIONS WITH ARCHITECTURAL AND MECHANICAL DRAWINGS.
 - PROVIDE REINFORCEMENT AS SHOWN FOR SQUARE, RECTANGULAR OR ROUND OPENINGS.
 - WWF SLAB REINFORCEMENT SHALL BE CUT AROUND OPENINGS, AND SHALL EXTEND TO WITHIN 2" OF OPENINGS ON ALL SIDES.
 - OPENINGS 10" AND SMALLER DO NOT REQUIRE ADDITIONAL REINFORCEMENT.
 - BLOCKOUT OPENING. FIELD CUT OPENINGS IN METAL DECK AFTER CONCRETE SLAB HAS BEEN POURED AND ATTAINED 75% OF THE SPECIFIED 28 DAY COMPRESSIVE STRENGTH.
 - REINFORCEMENT PERPENDICULAR TO DECK SPAN SHALL BE PLACED ON TOP OF DECK FLUTE.
 - REINFORCEMENT PARALLEL TO DECK SPAN SHALL BE PLACED IN THE LOWER FLUTE, AND SHALL BE CHAIED TO PROVIDE 1" MINIMUM COVER.
 - THIS DETAIL SHOWS TYPICAL CONDITIONS. VERIFY REINFORCING STEEL PLACEMENT WITH ENGINEER FOR SPECIAL CASES.

TYPICAL FRAMED OPENINGS IN COMPOSITE METAL DECK

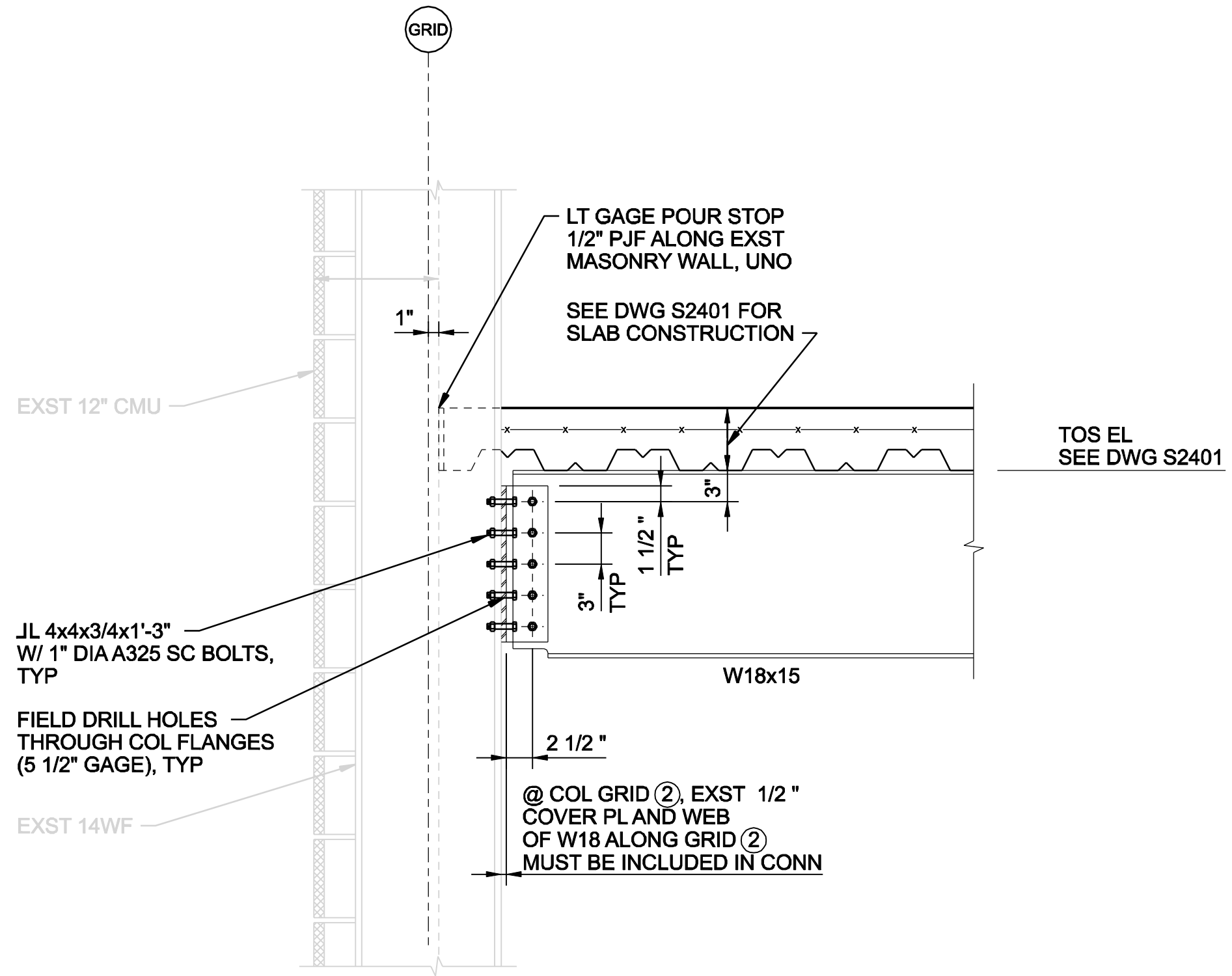
CONTRACTOR TO FIELD VERIFY ALL DIMENSIONS PRIOR TO INITIATING ANY DEMOLITION OR OTHER WORK INCLUDING ORDERING MATERIALS.



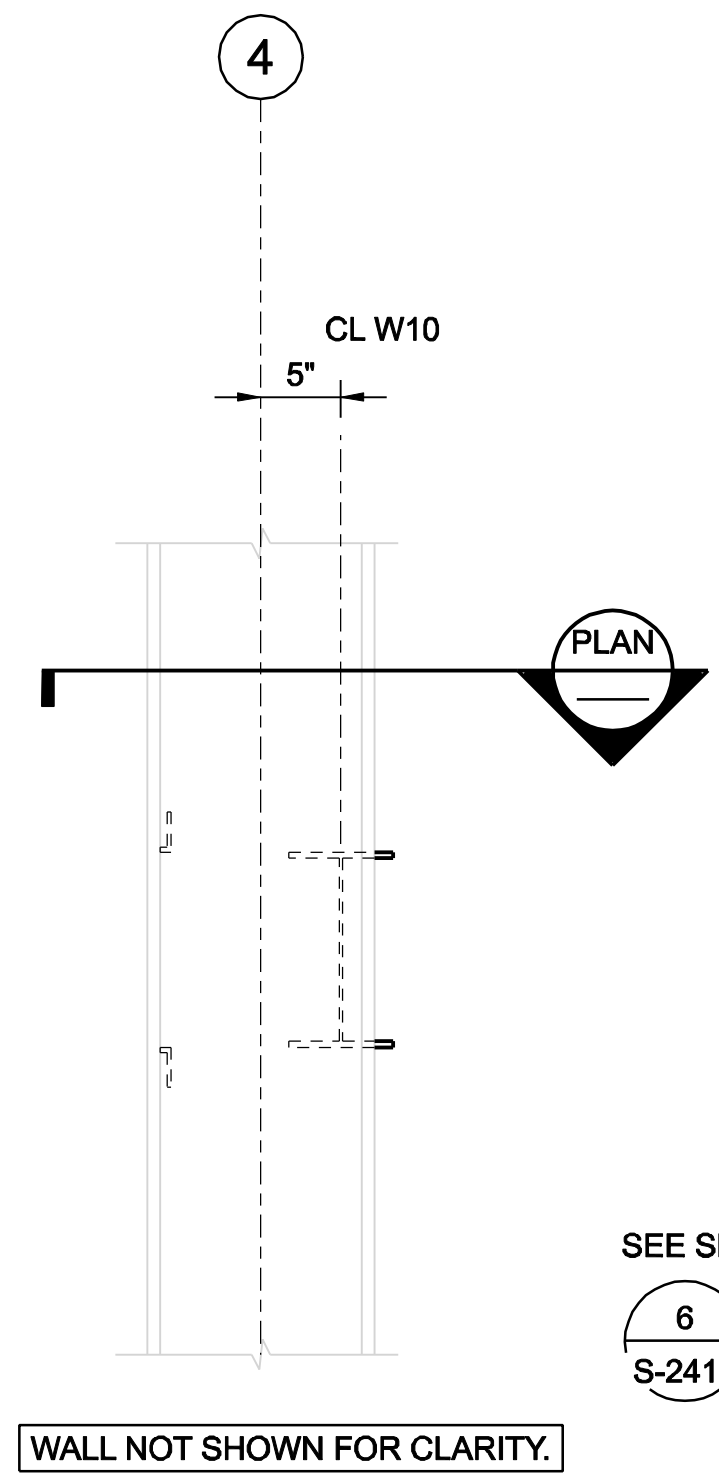
STAMFORD WATER POLLUTION CONTROL AUTHORITY SOLIDS DRYING PROJECT



STRUCTURAL MISCELLANEOUS DETAILS 1

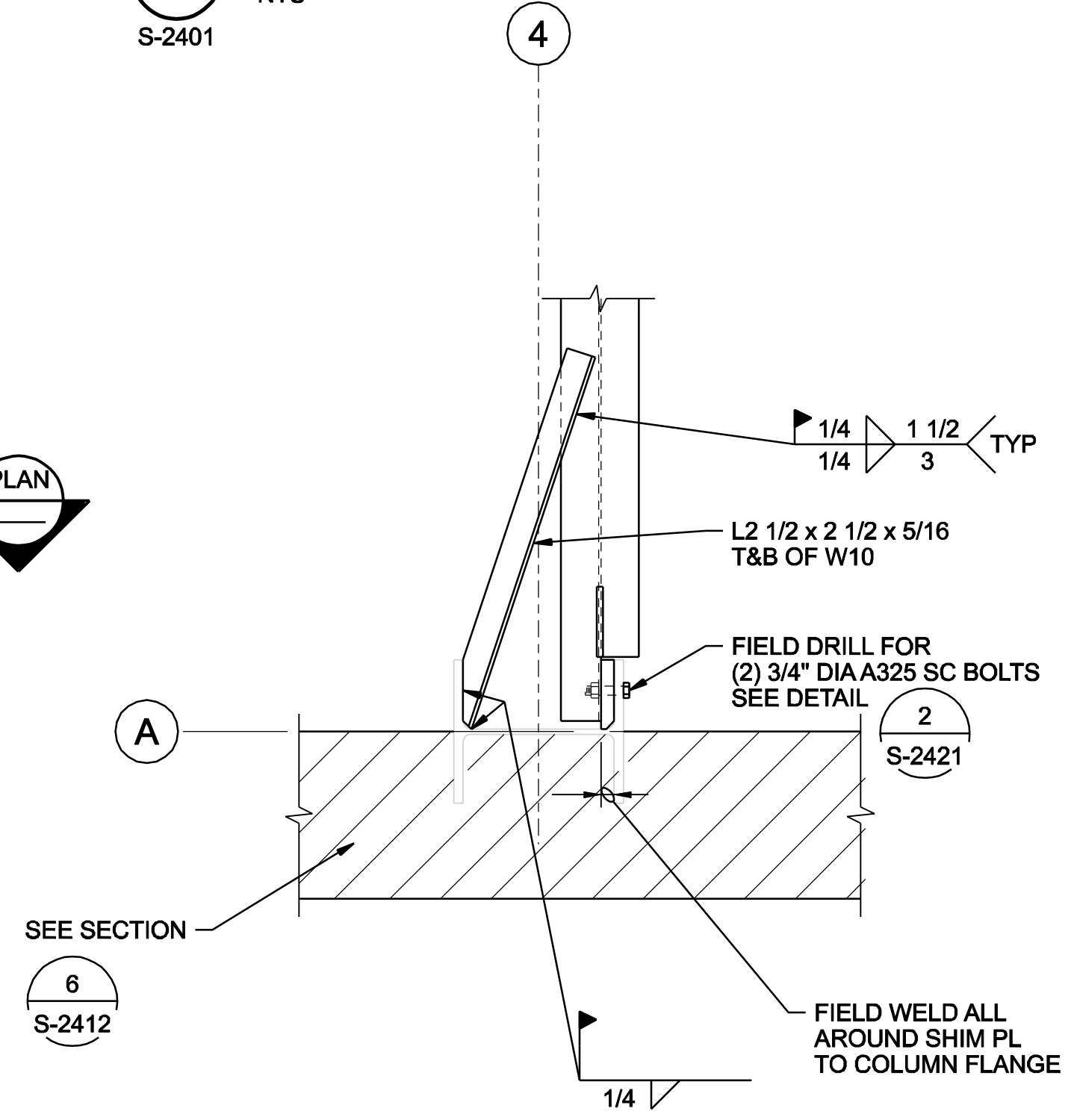


3 DETAIL
1"=1'-0"
S-2406



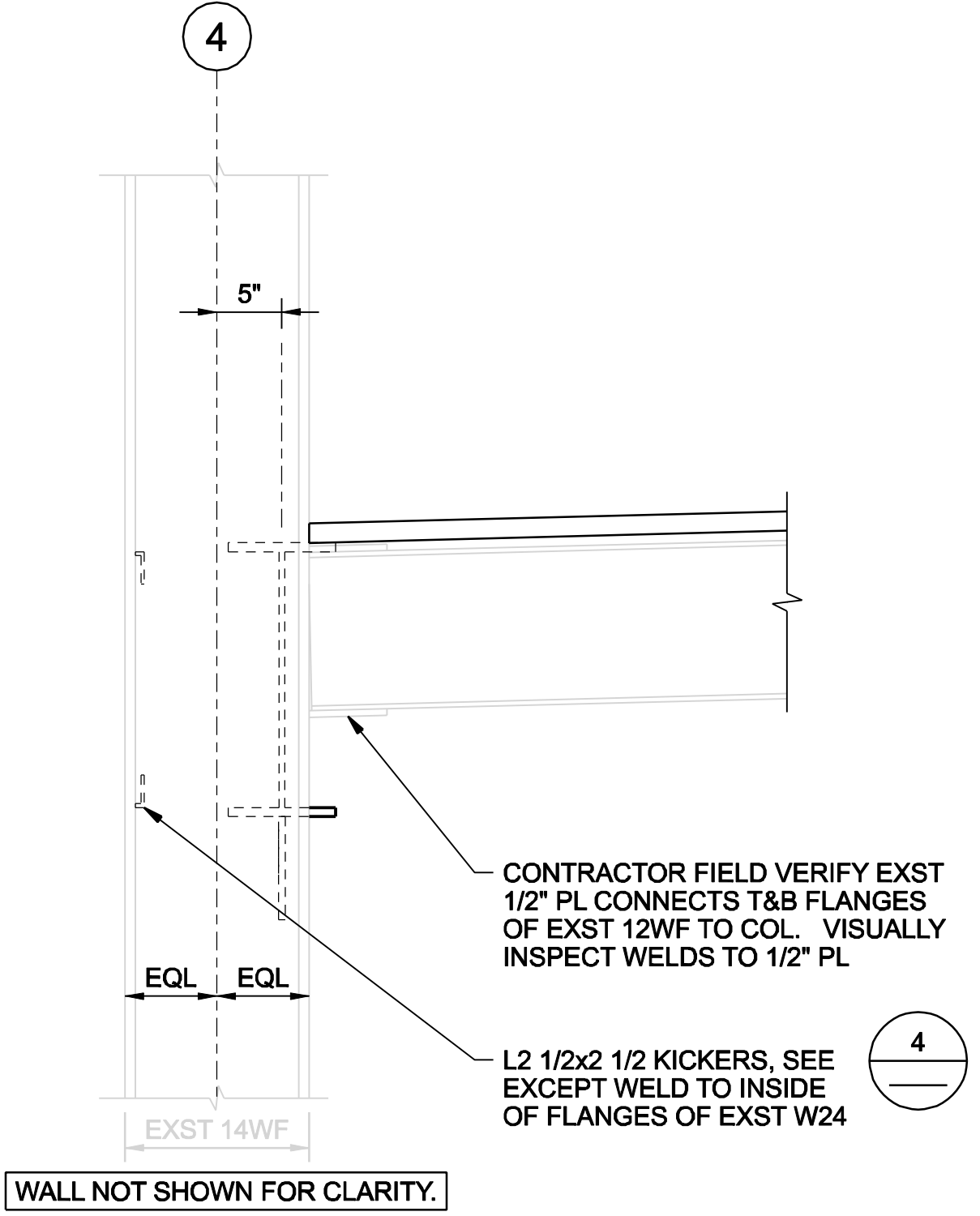
SECTION

2 DETAIL
NTS
S-2401



PLAN

4 DETAIL
1"=1'-0"
S-2403, S-2421



5 DETAIL
1"=1'-0"
S-2403

THESE RECORD DOCUMENTS HAVE BEEN PREPARED BASED ON THE INFORMATION PROVIDED BY OTHERS. THE DESIGN PROFESSIONAL HAS NOT VERIFIED THE ACCURACY AND/OR COMPLETENESS OF THIS INFORMATION AND SHALL NOT BE RESPONSIBLE FOR ANY ERRORS OR OMISSIONS WHICH MAY BE INCORPORATED HEREIN AS A RESULT.

VERIFY SCALE	BAR IS ONE INCH ON ORIGINAL DRAWING.
DATE	JUNE 2006
PROJ	334058
DWG	S-2418
SHEET	S31

REUSE OF DOCUMENTS: THIS DOCUMENT AND THE IDEAS AND DESIGNS INCORPORATED HEREIN, AS AN INSTRUMENT OF PROFESSIONAL SERVICE, IS THE PROPERTY OF CH2M HILL AND IS NOT TO BE USED, IN WHOLE OR IN PART, FOR ANY OTHER PROJECT WITHOUT THE WRITTEN AUTHORIZATION OF CH2M HILL. © CH2M HILL 2004. ALL RIGHTS RESERVED.